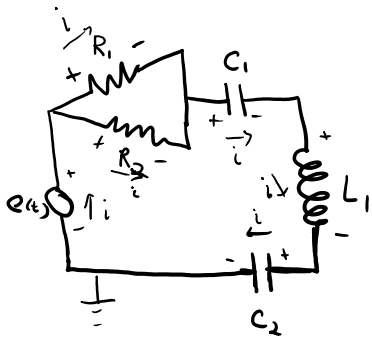


- HW 4 due date moved to F Oct 25
- Lab 2 due Oct 25
- Midterm M Oct 28
- Midterm will cover materials up to W Oct 23

# Exercise



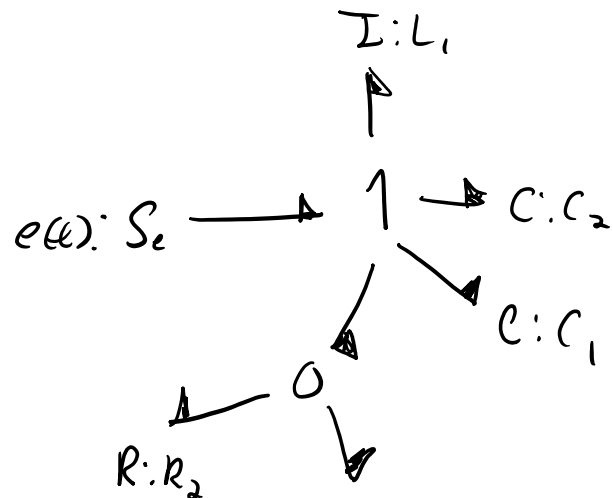
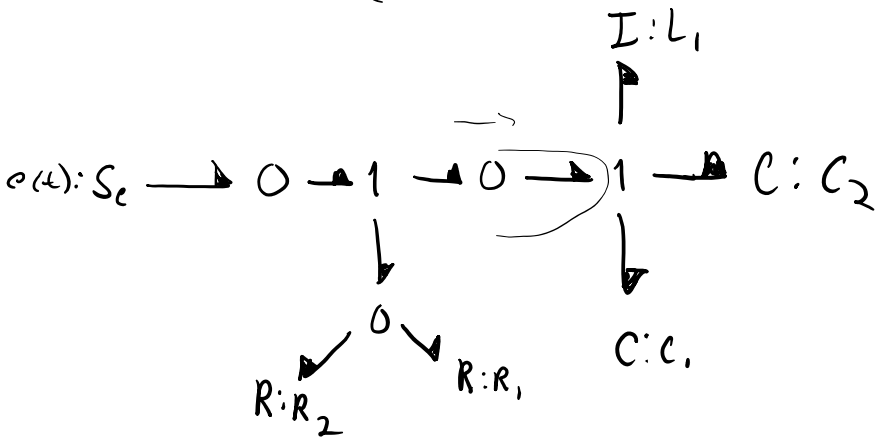
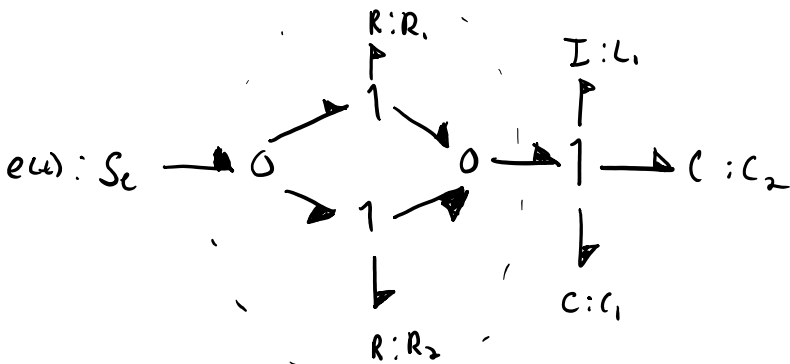
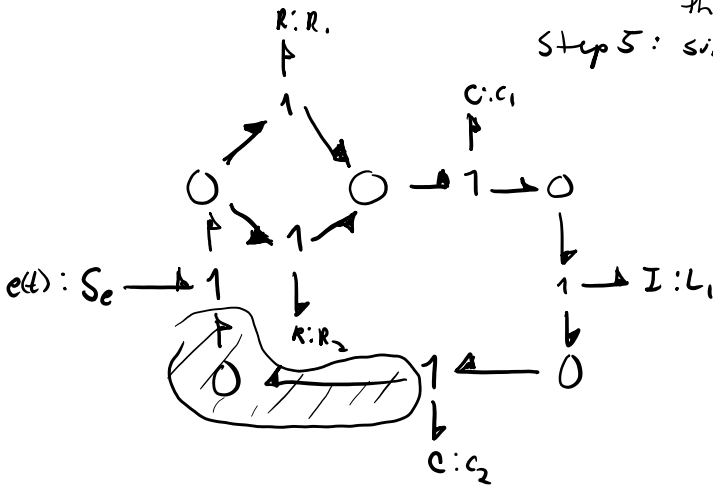
Step 1: Assign power convention

Step 2: Create  $\emptyset$  junctions for each node with common voltages

Step 3: Create 1 junctions to establish voltage drops

Step 4: Choose ground/reference node, set to zero voltage thus zero power -

Step 5: simplify (optional)



2

$\overline{A}$   
 $R:R_2$

$\downarrow$   
 $R:R_1$

