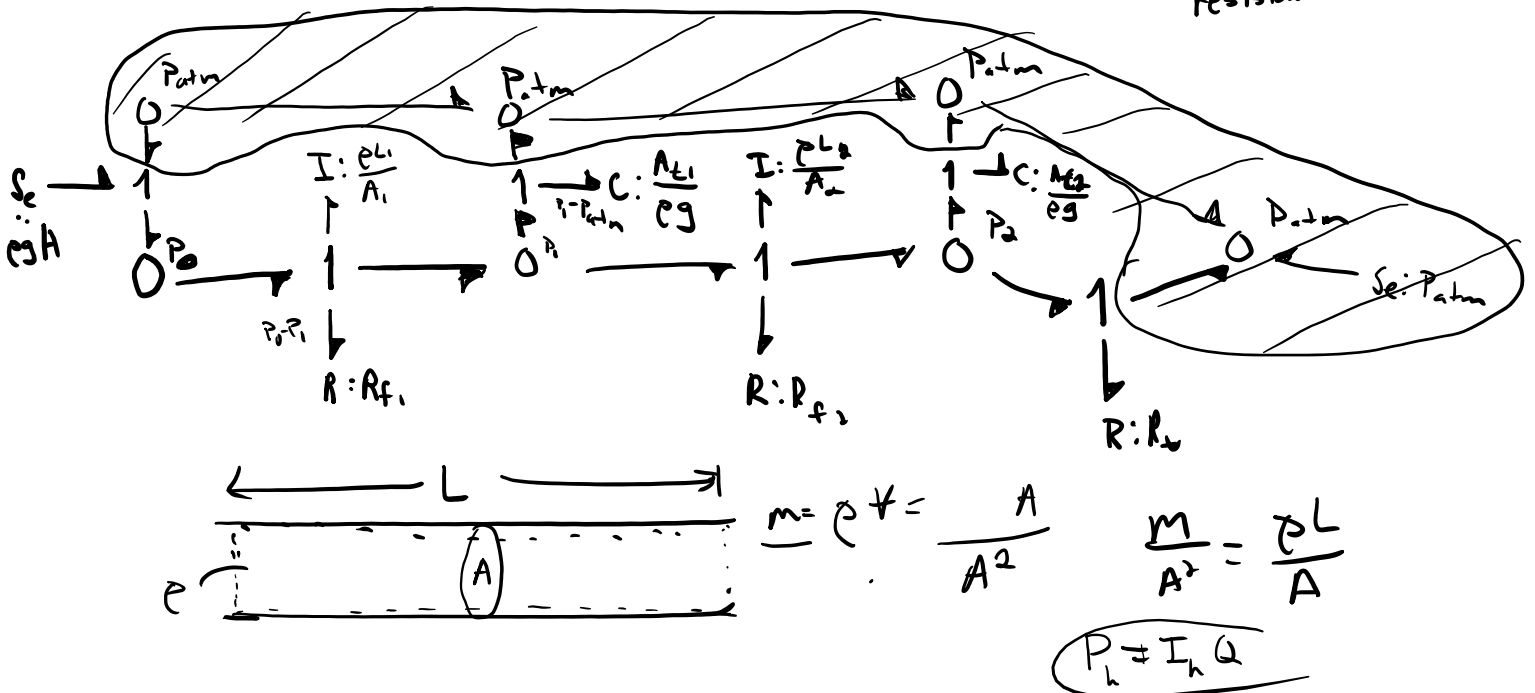
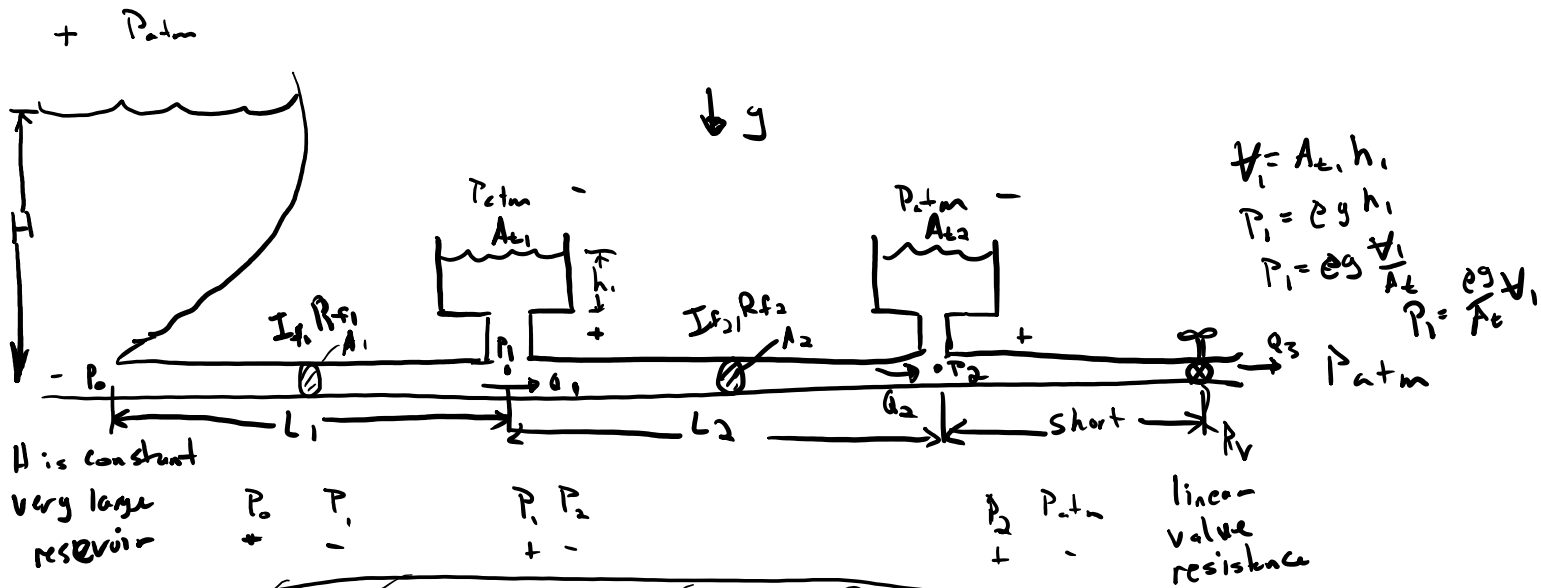


- HW 7 due Monday
- Lab 4 posted, due W Nov 27th
- Lab 4 & 5 partners, email Kevin by end of today



$R_f$  for laminar flow in pipe is approximately:

$$R_c = \frac{128 \mu l}{d^4} \quad d: \text{pipe } \phi$$

$$R_f = \frac{128 \mu l}{\pi d^4}$$

$d$ : pipe  $\phi$   
 $\mu$ : viscosity of the fluid  
 $l$ : length

### Example

